

Doorplate small RTS

Significant round elements characterize the consistent design of the guidance system.



rohr+fläche



Further use

In addition to the „normal“ use as a doorplate with room number, department designation and name, the sign can be equipped with pictograms or warning notices. The system profile is also used in a different configuration and height as a lift panel (see overviews) and as a table display (see variable information).

12/2020 © www.meng.de

Doorplate small RTS

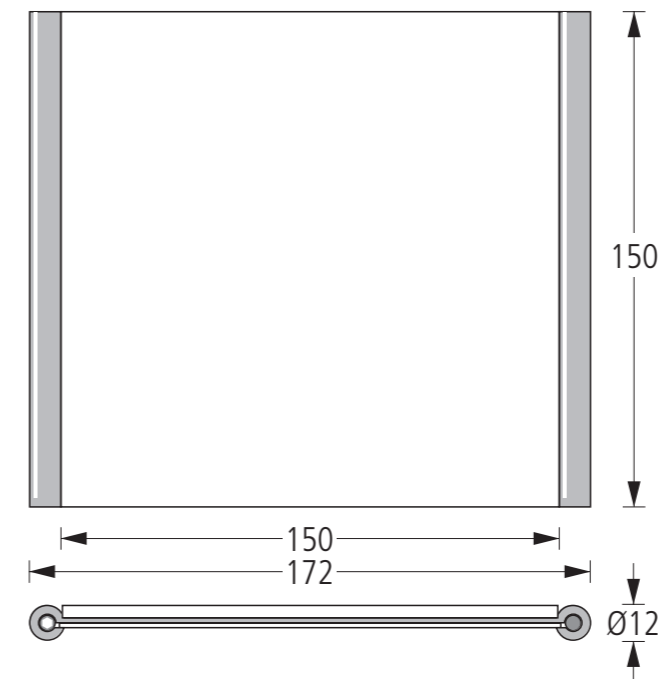
The round profiles on the sides allow the insertion of individual surfaces.



rohr+fläche

Dimensions

The width specifications always refer to the visible width, i.e. the area of a sign that can be used for information. The width of the side round elements must be added for the total width.



The original **rohr+fläche** doorplate was designed as the first continuous sign system for EDP labeling. The user has the possibility to carry out initial or subsequent inscriptions of the door signs himself by means of EDP print. The door sign consists of an aluminum profile with lateral vertical round elements in a visible width of 150 mm. The information carrier and an acrylic panel are inserted and secured into the profile. The scope of delivery includes the acrylic cover pane (one side glossy, one side matt anti-reflective) with diamond-polished edges, a white background plate, the mounting plate and the fixing material. In addition to the standard height of 150 mm, other heights are available.

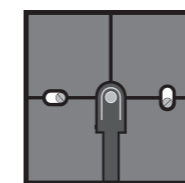
Mounting

The wall mounting is usually doweled. The mounting plate can be attached in advance, and the labeled door sign is then completely clipped on. It is held and fixed securely by a special technique. It is also possible to attach the sign to smooth surfaces using adhesive tape or to steel walls using magnetic adhesion.

Fuse

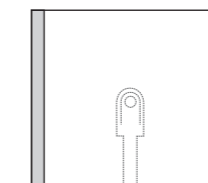
The acrylic cover plate with the text sheet is secured in the profile by stud screws. A system key enables easy replacement of the information on the mounted sign. On request, we use outdoor door signs with stainless steel studs for a small extra charge.

Mounting:

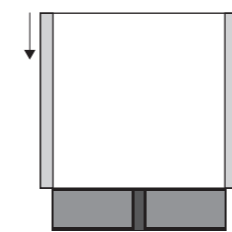


Fasten the mounting plate.

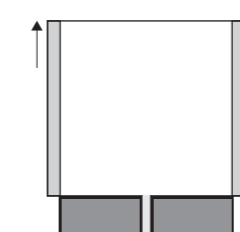
Disassembly:



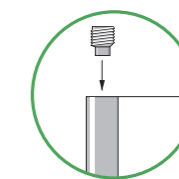
Unlock with tool.



Push on the shield until it snaps into place.



Push up sign.



The inserts are secured against unauthorized removal at the top with 2 stud screws. Never tighten them!

Article description	Size	Surface of the tubes
RTS 15 L	RTS 15 L	RTS 15 L
RTS stands for rohr+fläche door sign standard	15 Height in cm	S Silver anodized
	Width always 150 mm	L Lacquered

Standard sizes

Date in mm	Width in mm	Height in mm	Model
75	150	150	RTS 07
100	150	150	RTS 10
120	150	150	RTS 12
150	150	150	RTS 15
210	150	150	RTS 21
			DIN A5