

Escape signpost RFW

Photoluminescent escape signpost made of stainless steel, without chains and eyelets.



rohr+fläche



F02



F03



F04



F05



F06



F07



F08



F09

In addition to the costly escape route luminaires, the less expensive afterglow version is sufficient in many places if no safety lighting is available. Especially for visitor and guest areas, meng has developed a high-quality yet simple solution: Sign holders made of frosted stainless steel with laterally stable tubes (d = 8 mm) allow both wall and ceiling mounting. The suspension technique in metal grid ceilings offers the invaluable advantage that no drilling is required in the ceiling during installation. Low-reflection 1.5 mm thick acrylic discs provide exemplary protection for the photoluminescent films.

Escape signpost RFW

Convenient wall and ceiling mountings enable quick assembly.

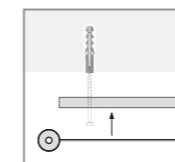
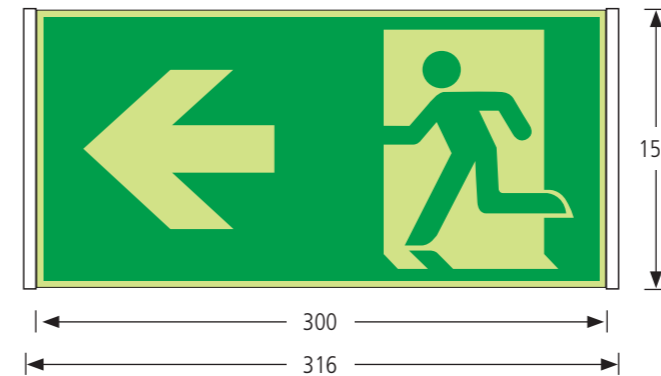


rohr+fläche

The use of escape signposts in buildings is governed by various regulations. These specify symbolism, attachment and design. Where no illuminated version is mandatory, photoluminescent surfaces can be used. The **system rohr+fläche** allows also for these signposts a solution in continuous design. A stainless steel sign specially designed for this application can be used both as a wall-mounted version and as a single or double-sided ceiling sign.

Execution

The color design and symbolism of the escape signposts are specified in the workplace directive ASR A1.3 and in the standard DIN EN ISO 7010. They are available with differently arranged pictograms and can therefore be supplied to suit all required situations on site.



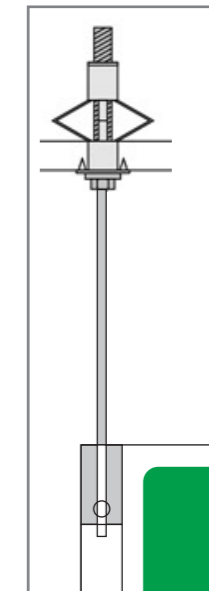
Wall signs

First, mounting plates are doweled or glued to the wall. Then the stainless steel signs with the respective pictogram are glued on.

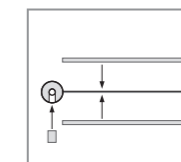
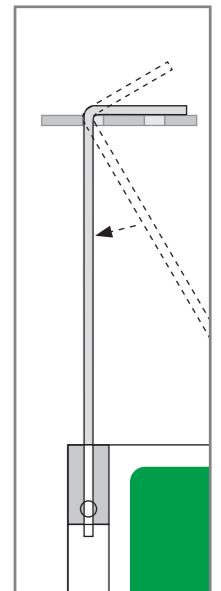
Ceiling signs

In the ceiling-mounted version, fine brass nipples with stainless steel clamping screws are integrated in the tubes. The signs can be safely suspended using the fine steel cable (d = 1.8 mm) of the normal signposts. An M3 clamping screw fixes the sign adjustably to the suspension. Perforated covers allow easy anchoring without drilling. A 2 mm stainless steel wire is angled and hooked into the ceiling holes. The sign is then fixed to the wire rods.

Rope attachment in plasterboard ceilings.



Wire attachment in perforated metal ceilings.



Ceiling signs

The pictograms on the ceiling suspended double-sided escape route signs are also glued on. Material thickness 5 mm, weight 500 gr.

RFWW 1530 E F04	RFWW 1530 E F04	RFWW 1530 E F04	RFWW 1530 E F04
RFW stands for rohr+fläche Fluchtwegweiser	RFWW Wall RFWE one sided ceiling RFWD double sided ceiling	15 Height in cm 30 Width in cm (for up to 15 meters reading distance).	E stainless steel F04 icon with arrow pointing left
Article description	Suspension type	Size	Version